

# Apprendre le violon

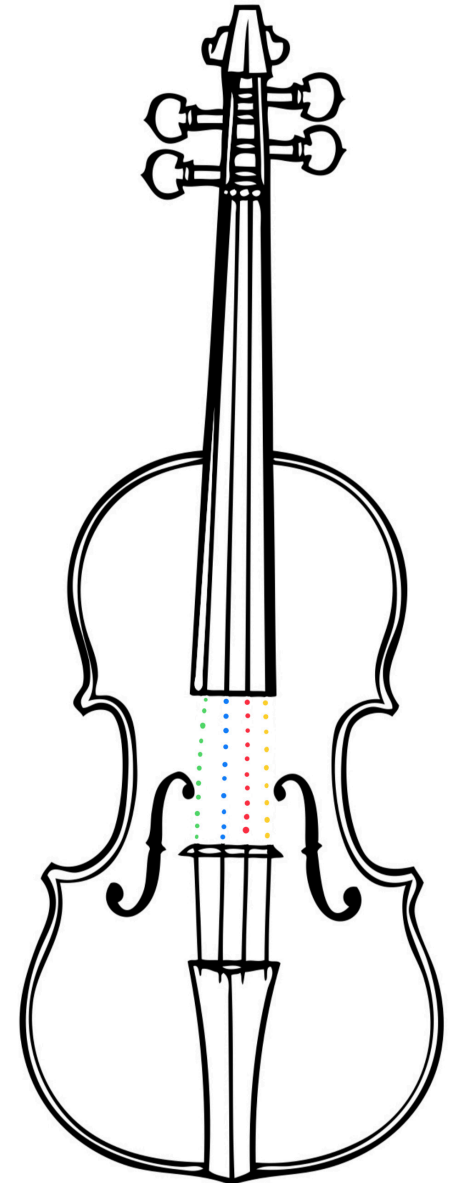
- 1er cahier -

Une méthode d'apprentissage progressive et ludique du violon, mettant en valeur la créativité de l'enfant.

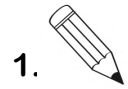


Élève :

Julien DUPONT @2025



## Le violon



la volute

les chevilles (4)

la touche

la table

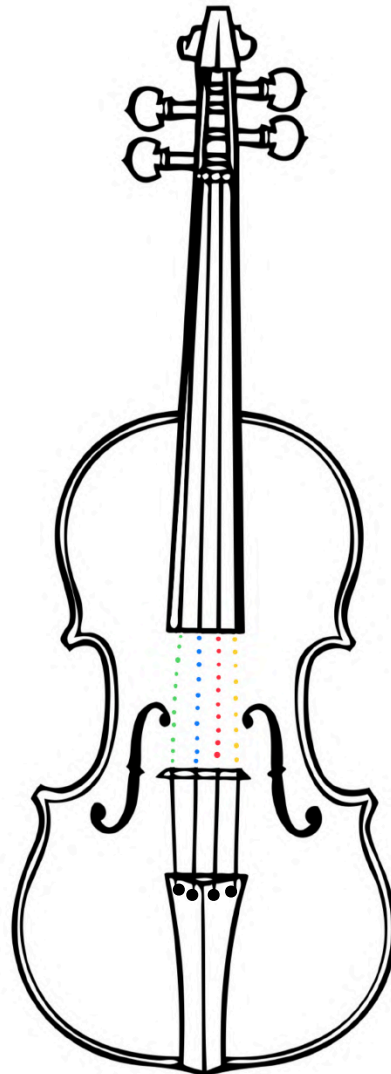
les cordes (4)

les ouïes (2)

le chevalet

la mentonnière

les tendeurs (4)



## Les cordes



**Sol**

**Ré**

**La**

**Mi**

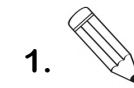


**Sol Sol**

**Ré Ré**

**La La**

**Mi Mi**



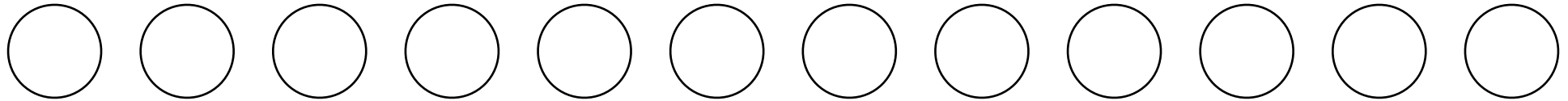
— — — — — — — — —



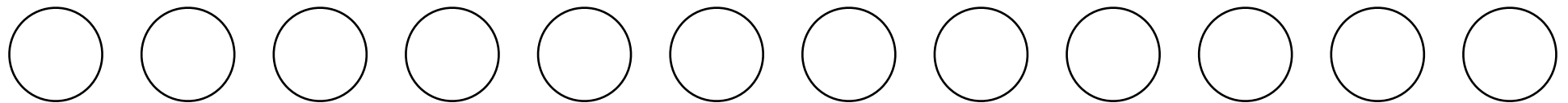
— — — — — — — — —

## Activité

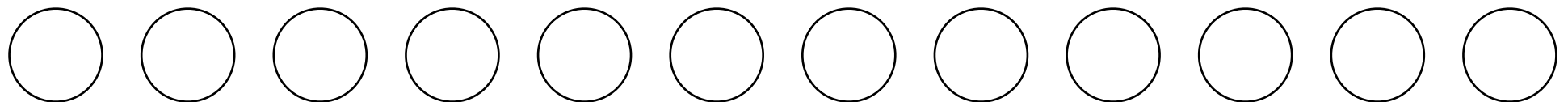
1.  2. 




1.  2. 



1.  2. 



## Rythmes

1. 

Ta



Titi



Sch...



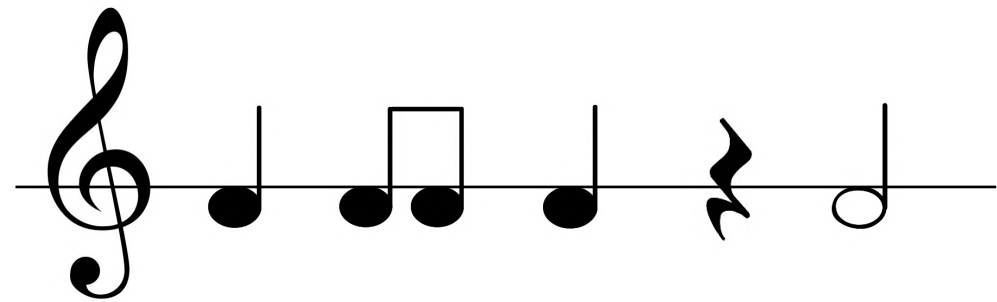
Ta-a




## Activité

1. 

2. 



1. 

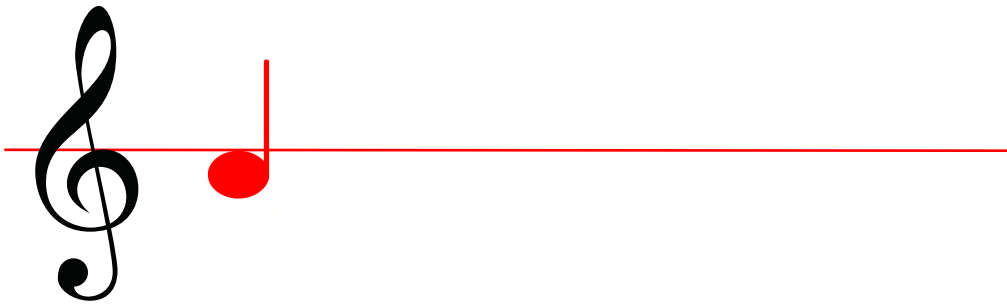
2. 

3. 



**Activité**

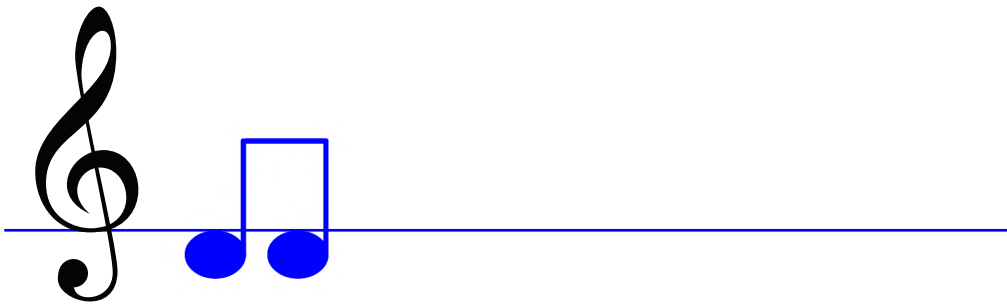
- 1. 
- 2. 



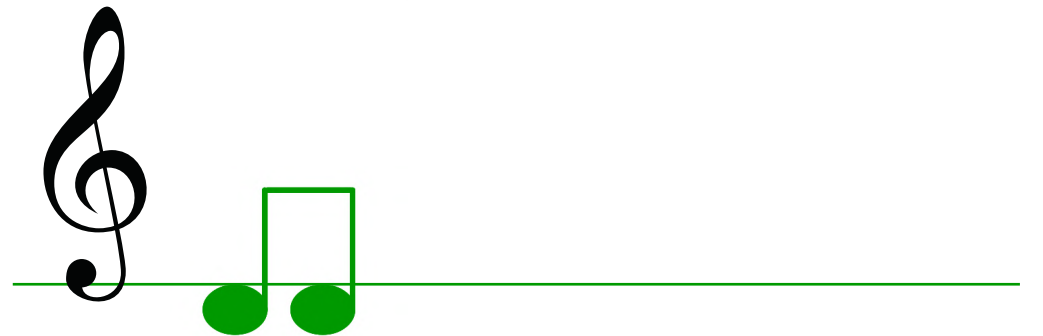
- 1. 
- 2. 



- 1. 
- 2. 



- 1. 
- 2. 

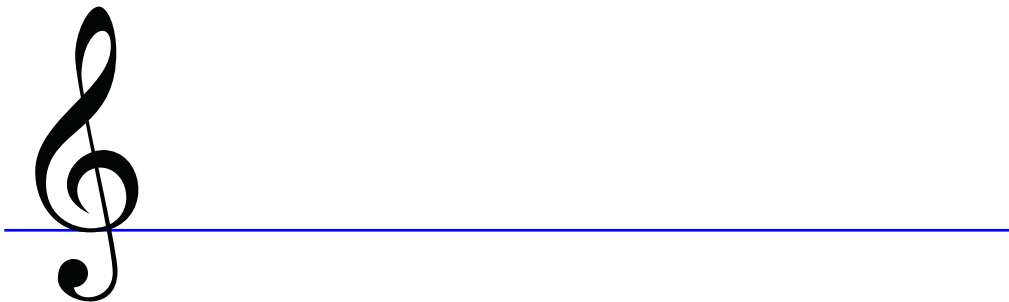


## Activité

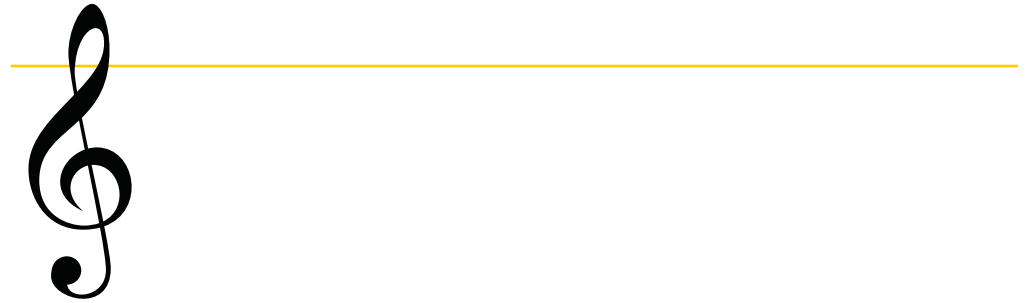
1. 
2. 



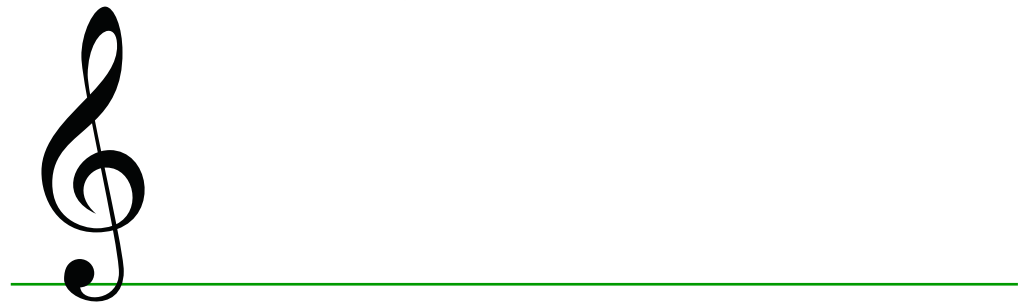
1. 
2. 



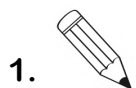
1. 
2. 



1. 
2. 



## L'archet



La baguette

La pointe

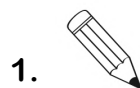
Le milieu

La mèche

Le talon



## Le talon



La pastille

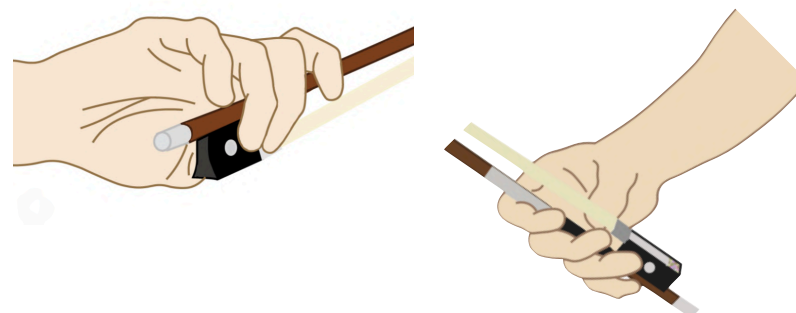
La poucette

La virole

Le bouton

La garniture

## La tenue de l'archet



### La position des doigts :

Le pouce est courbé sous la poucette.

Le 2ème doigt est face au pouce et touche la virole.

Le 3ème doigt recouvre la pastille.

Le 1er doigt repose sur la garniture.

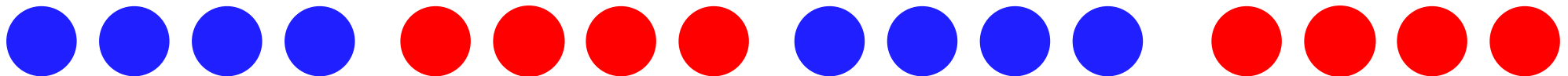
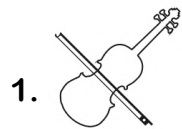
Le 4ème doigt se tient sur la baguette, près du bouton.

## Comment utiliser l'archet



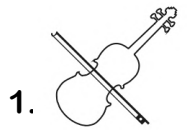
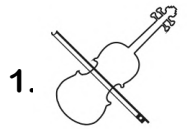
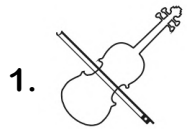
- D'abord il faut vérifier la position des doigts sur l'archet. Ils doivent être tranquillement posés sur la baguette sans la serrer.
- Poser doucement l'archet sur la corde entre le milieu et le talon (centre de gravité ou "milieu par balance").
- Tenir le violon droit (position horizontale) et garder les épaules relâchées.
- Tapoter chaque doigt sur la baguette pour s'assurer qu'il ne soit pas crispé.
- Tirer doucement l'archet jusqu'à la pointe et revenir au point de départ.

## Activité sur cordes à vides

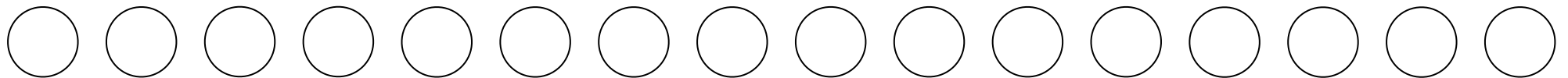
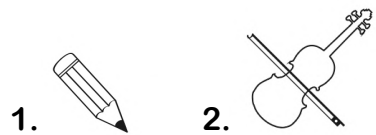
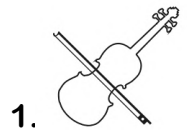
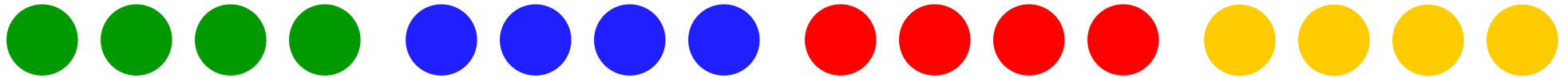
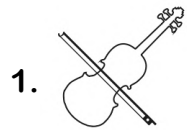




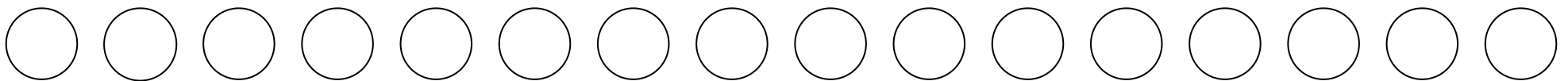
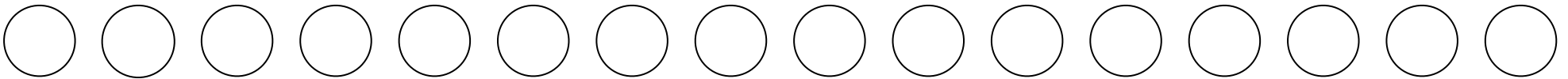
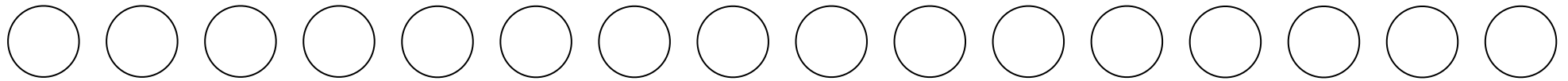
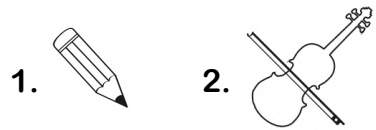
## Activité sur cordes à vides



## Activité sur cordes à vides

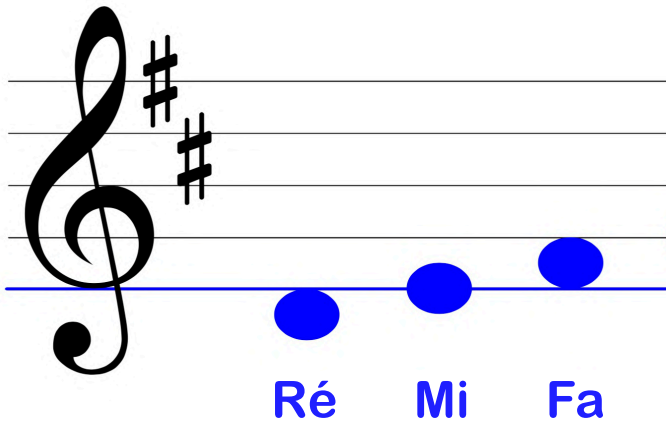
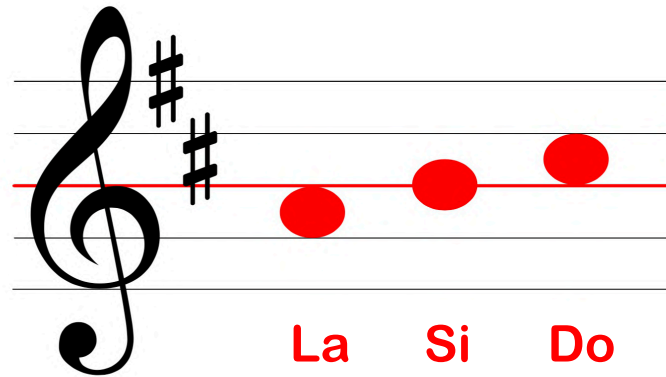


## Activité sur cordes à vides



## Les notes

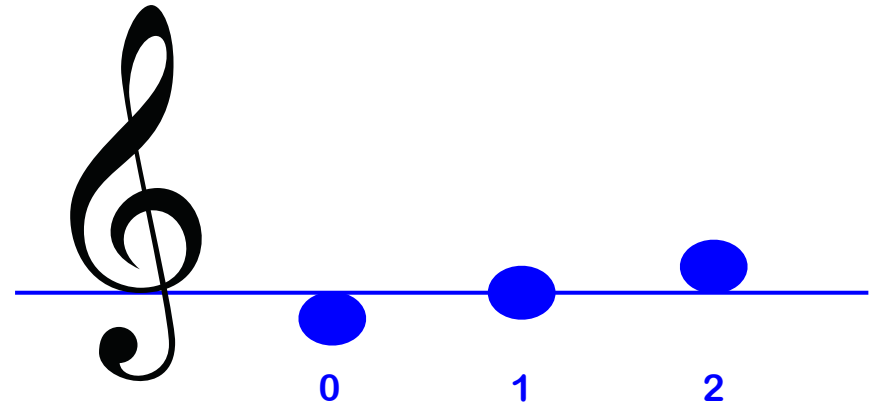
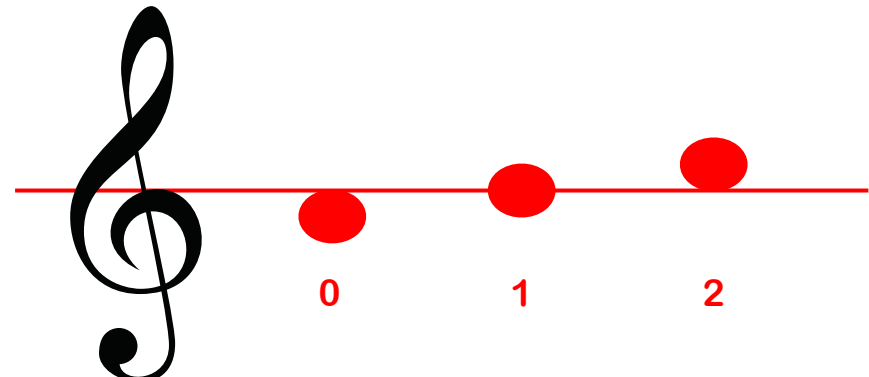
1. 





## Les doigts

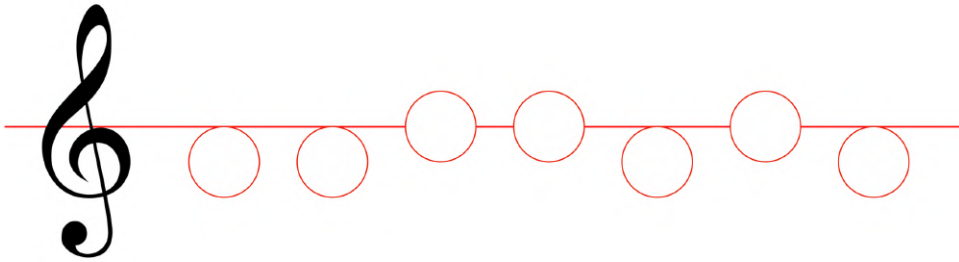
1. 

2. 

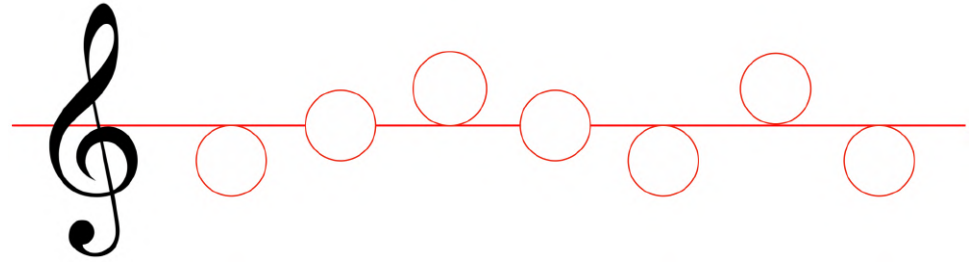


## Activité

1.  2. 



1.  2. 



1.  2. 

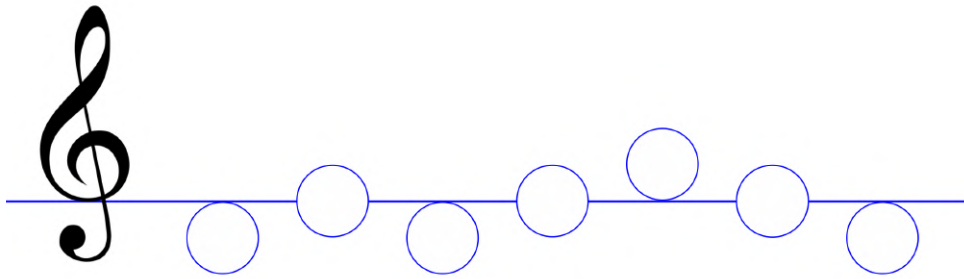


1.  2. 

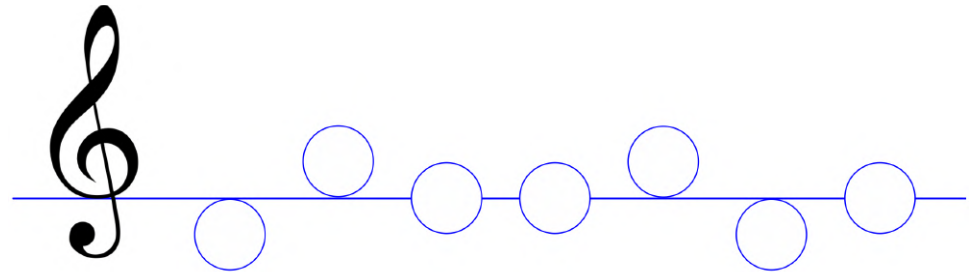


**Activité**

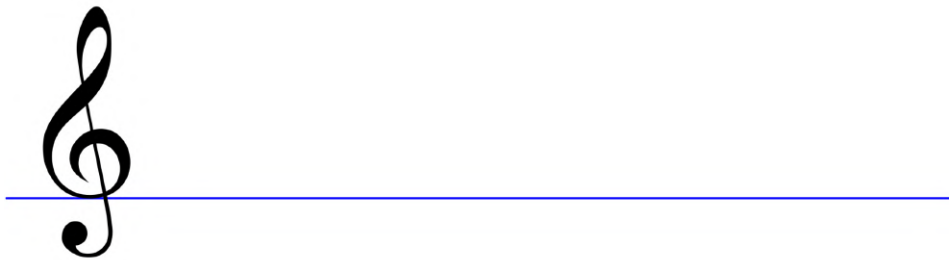
1.  2. 



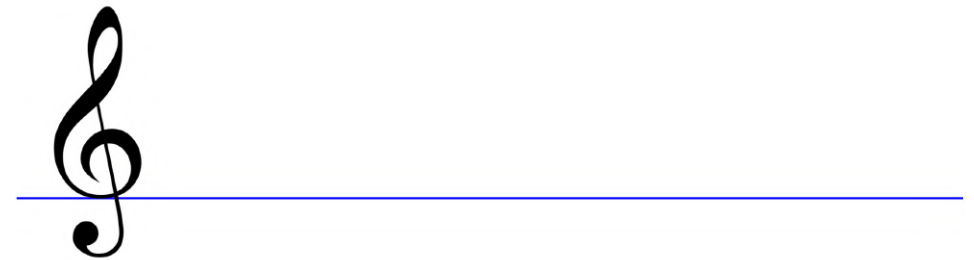
1.  2. 



1.  2. 

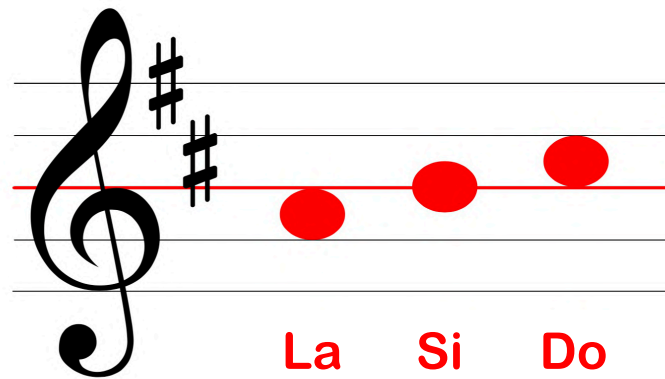


1.  2. 

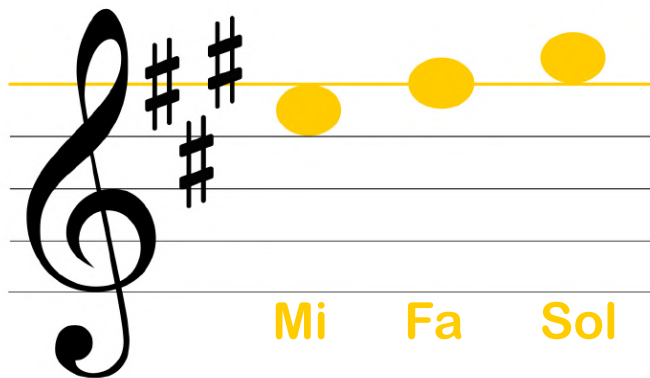


## Les notes

1. 



La Si Do

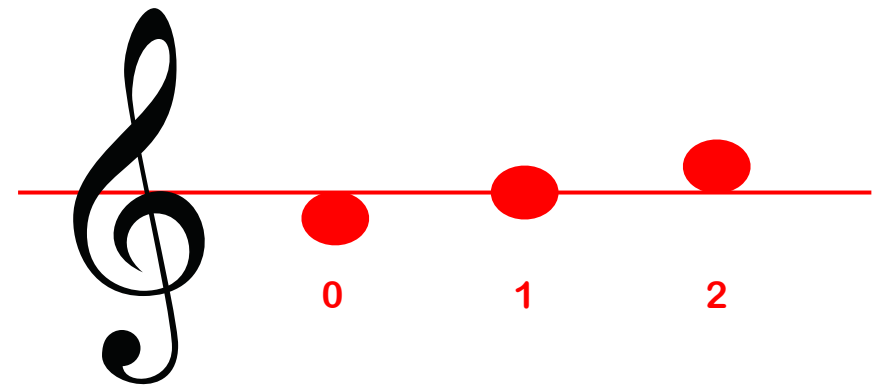


Mi Fa Sol

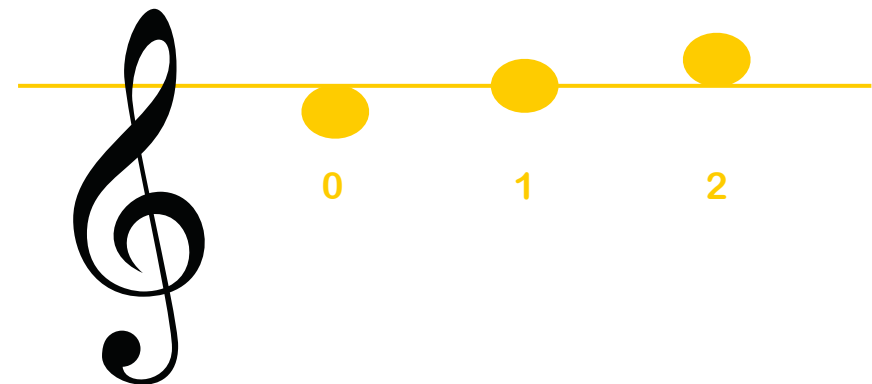
## Les doigts

1. 

2. 



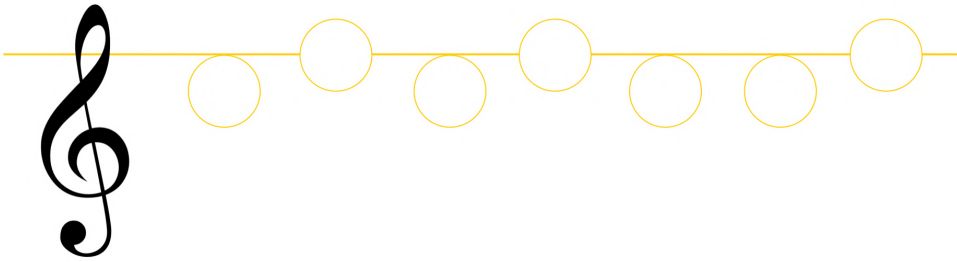
0 1 2



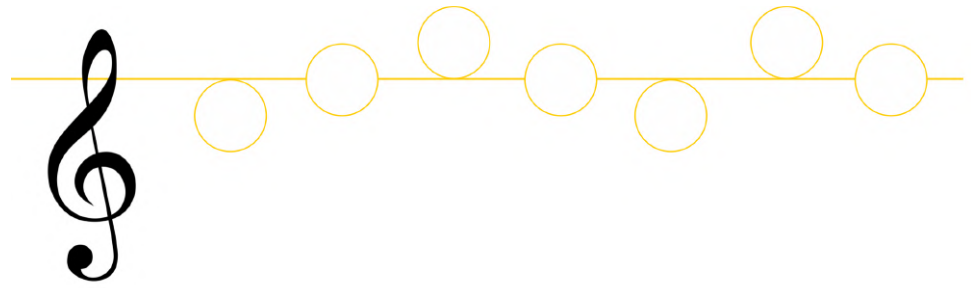
0 1 2

## Activité

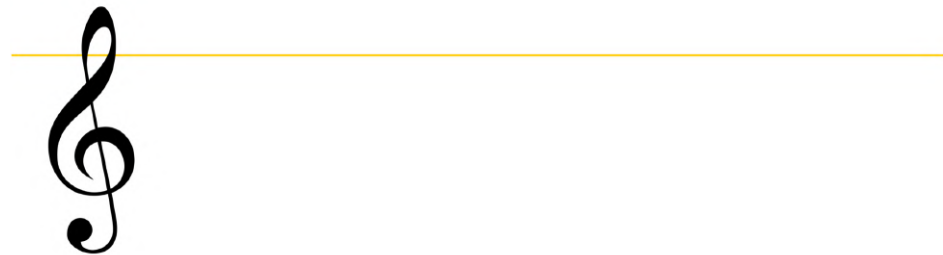
1.  2. 



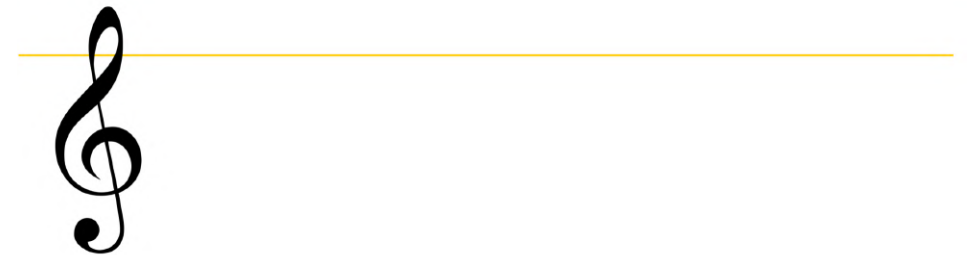
1.  2. 



1.  2. 



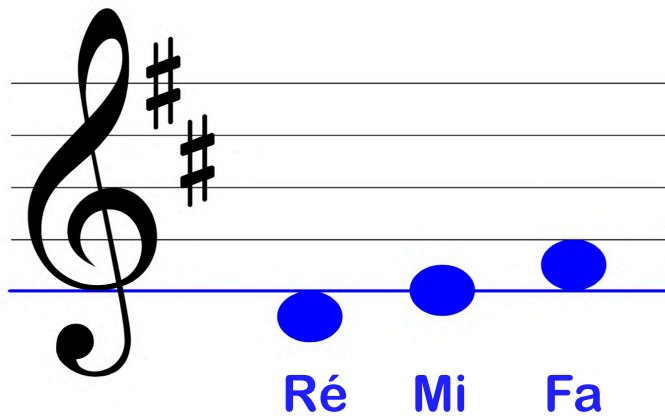
1.  2. 



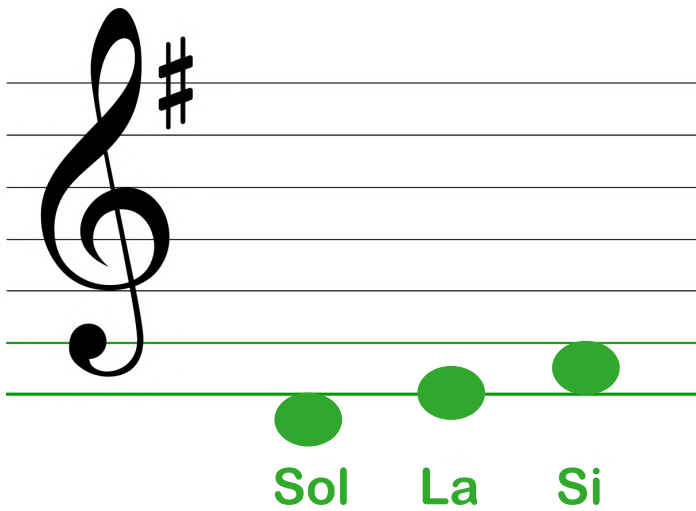


## Les notes

1. 



Ré Mi Fa

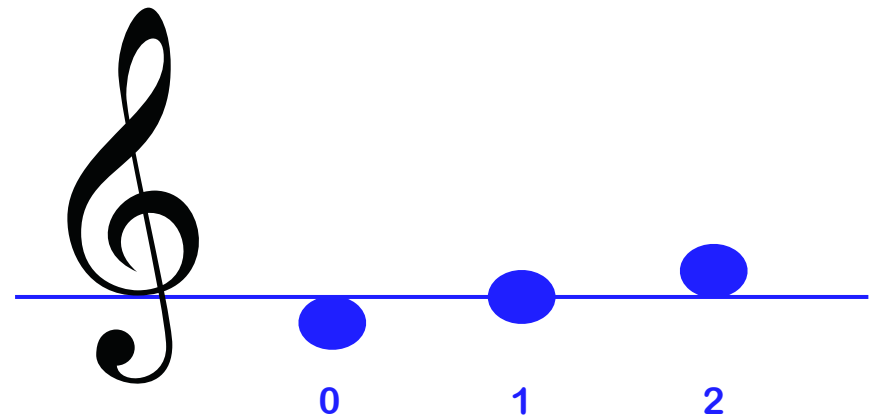


Sol La Si

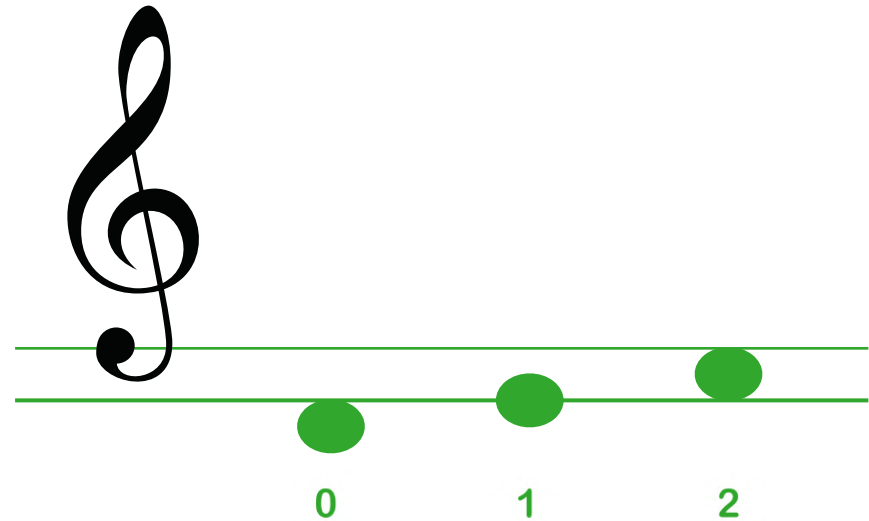
## Les doigts

1. 

2. 



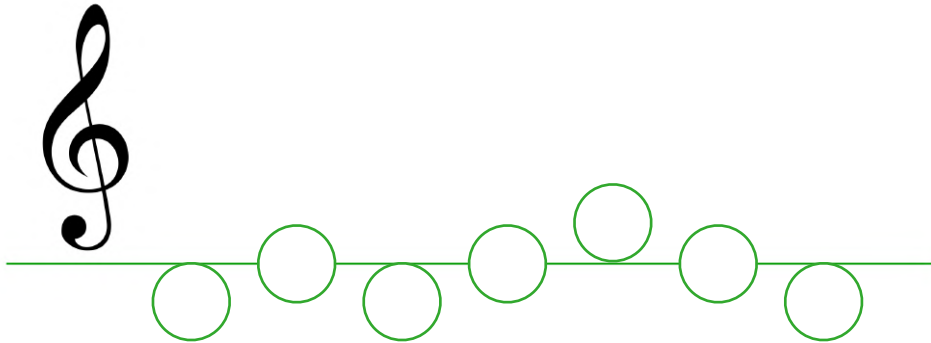
0 1 2



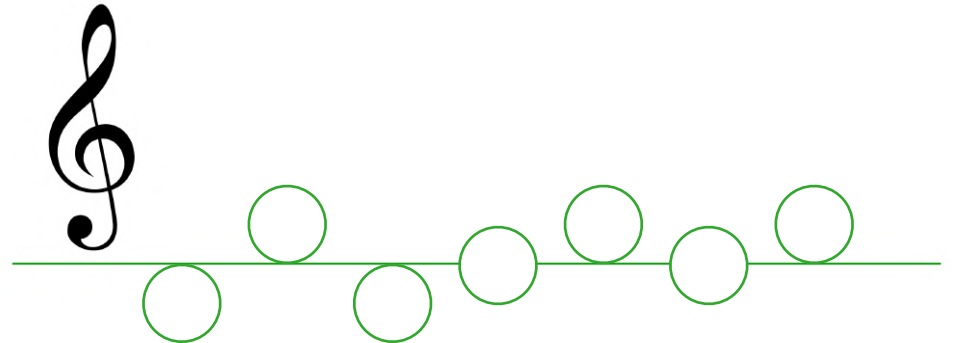
0 1 2

## Activité

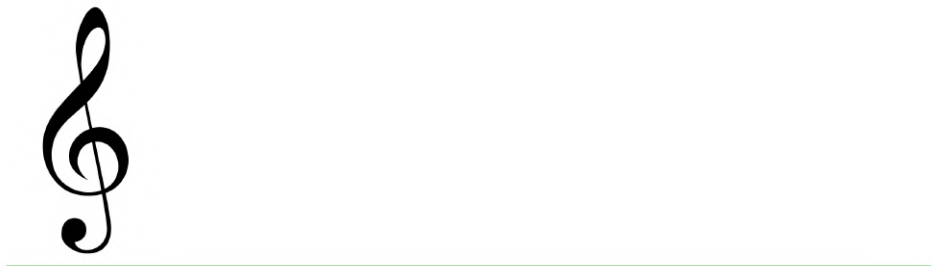
1.  2. 



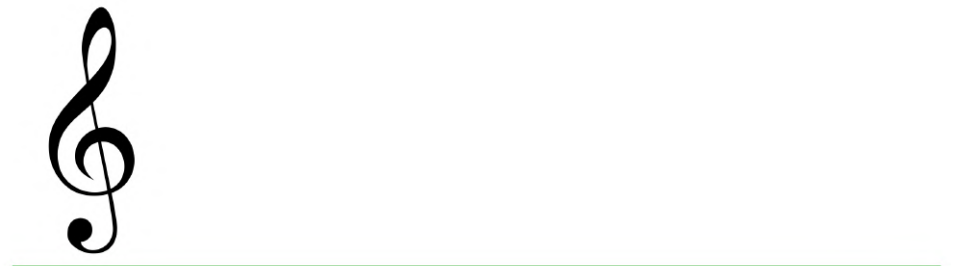
1.  2. 



1.  2. 

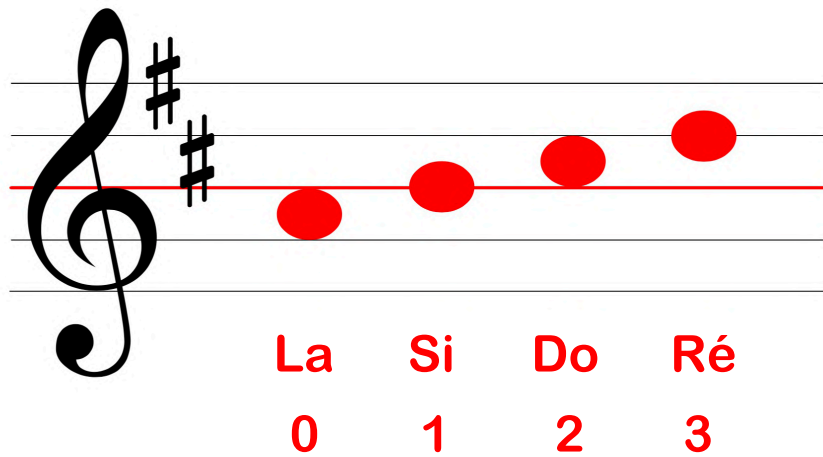


1.  2. 



## Les notes et doigts 0123

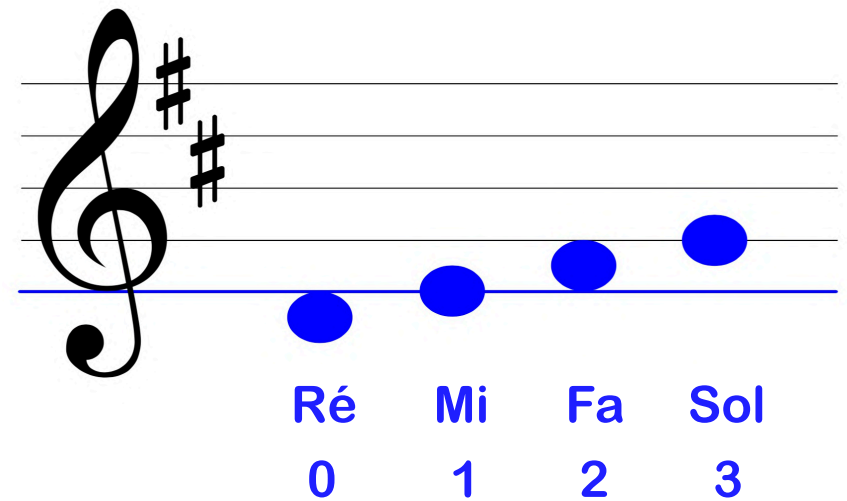
1.  2. 



A musical staff in treble clef with a key signature of two sharps (F# and C#). The staff contains four red dots representing notes: La (open string), Si (first finger), Do (second finger), and Ré (third finger). Below the staff, the notes and fingerings are labeled in red: La 0, Si 1, Do 2, Ré 3.

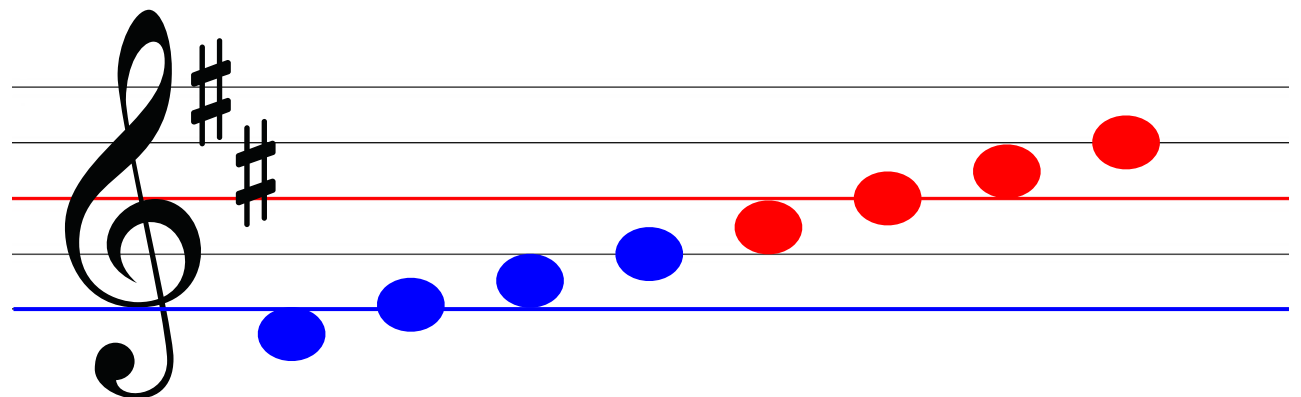
## Les notes et doigts 0123

1.  2. 



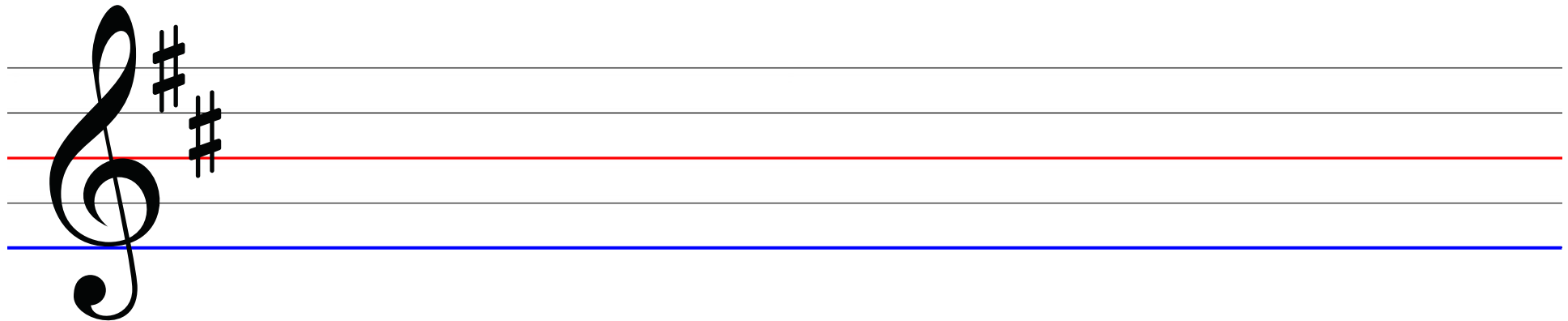
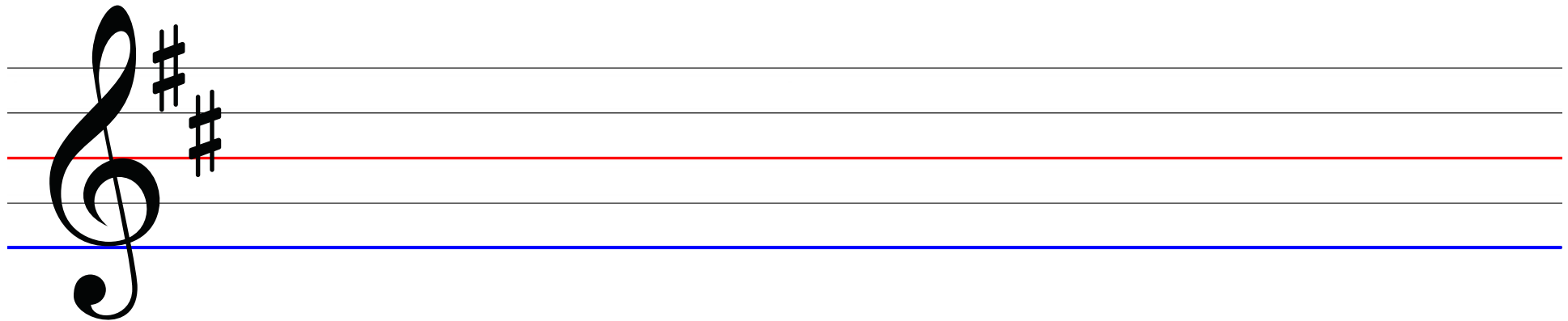
A musical staff in treble clef with a key signature of two sharps (F# and C#). The staff contains four blue dots representing notes: Ré (open string), Mi (first finger), Fa (second finger), and Sol (third finger). Below the staff, the notes and fingerings are labeled in blue: Ré 0, Mi 1, Fa 2, Sol 3.

## La gamme de Ré majeur



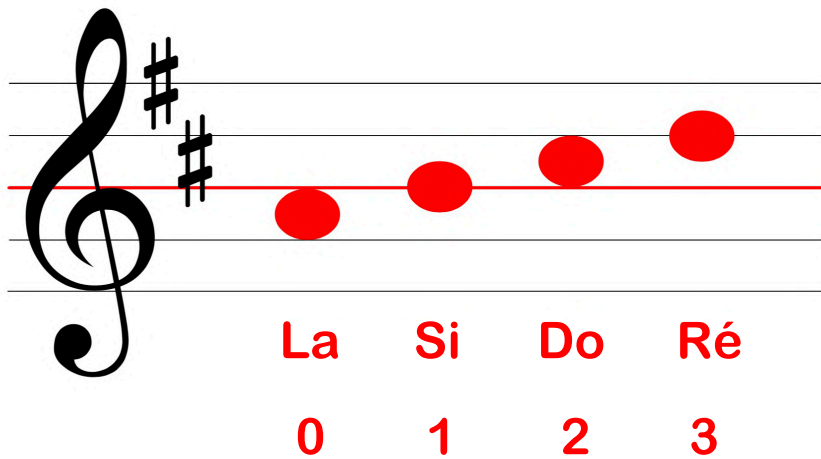
A musical staff in treble clef with a key signature of two sharps (F# and C#). The staff shows the full Ré major scale. The notes are: Ré (open string, blue dot), Mi (first finger, blue dot), Fa (second finger, blue dot), Sol (third finger, blue dot), La (open string, red dot), Si (first finger, red dot), Do (second finger, red dot), and Ré (third finger, red dot). The notes are arranged in an ascending sequence across the staff.

## Activitié



## Les notes et doigts 0123

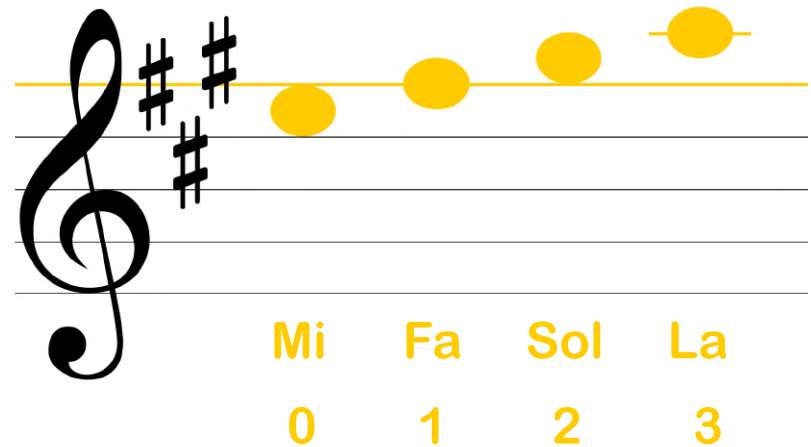
1.  2. 



A musical staff in treble clef with a key signature of two sharps (F# and C#). Four red dots are placed on the staff to represent the notes of an A major triad: La (open string), Si (first space), Do (second space), and Ré (third space). Below the staff, the notes are labeled in red: La, Si, Do, Ré, with fingerings 0, 1, 2, 3 respectively.

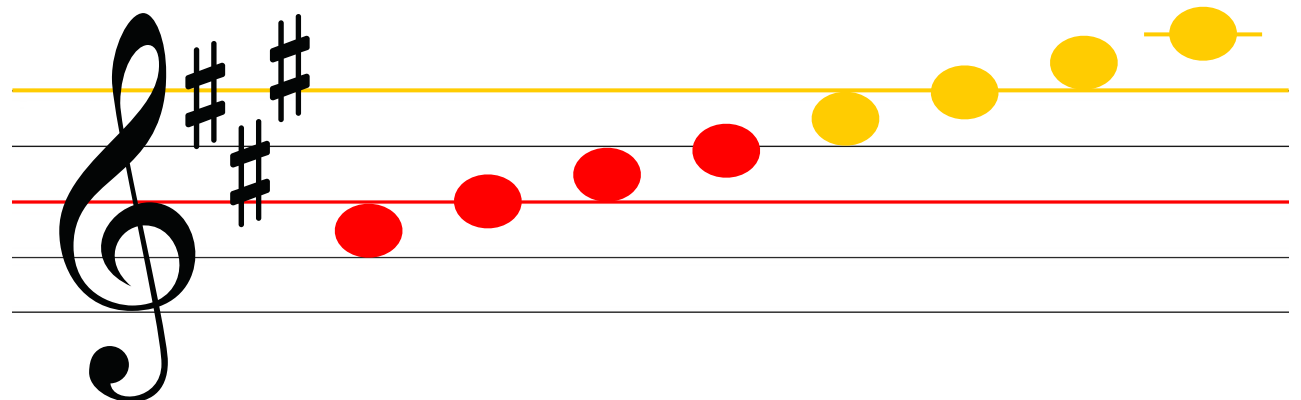
## Les notes et doigts 0123

1.  2. 



A musical staff in treble clef with a key signature of two sharps (F# and C#). Four yellow dots are placed on the staff to represent the notes of an A major scale: Mi (first space), Fa (second space), Sol (third space), and La (third space). Below the staff, the notes are labeled in yellow: Mi, Fa, Sol, La, with fingerings 0, 1, 2, 3 respectively.

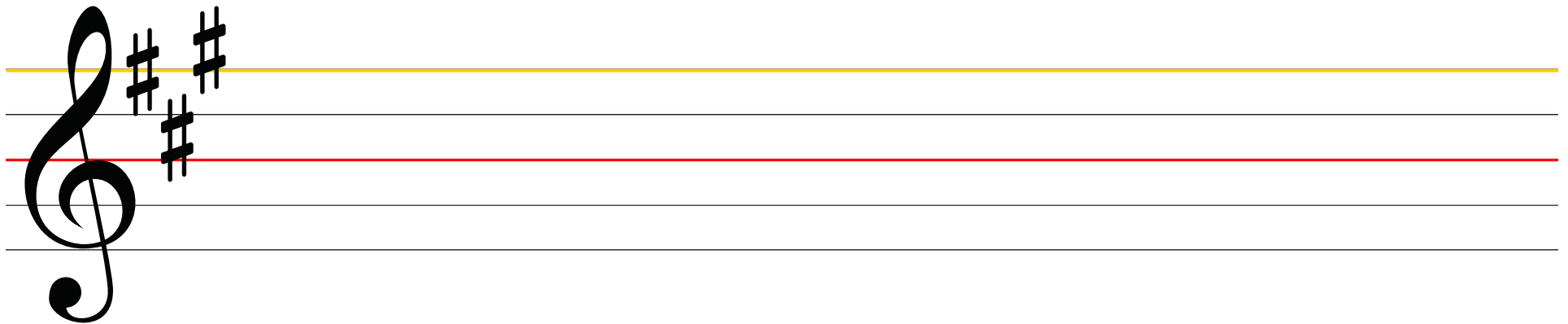
## La gamme de La majeur



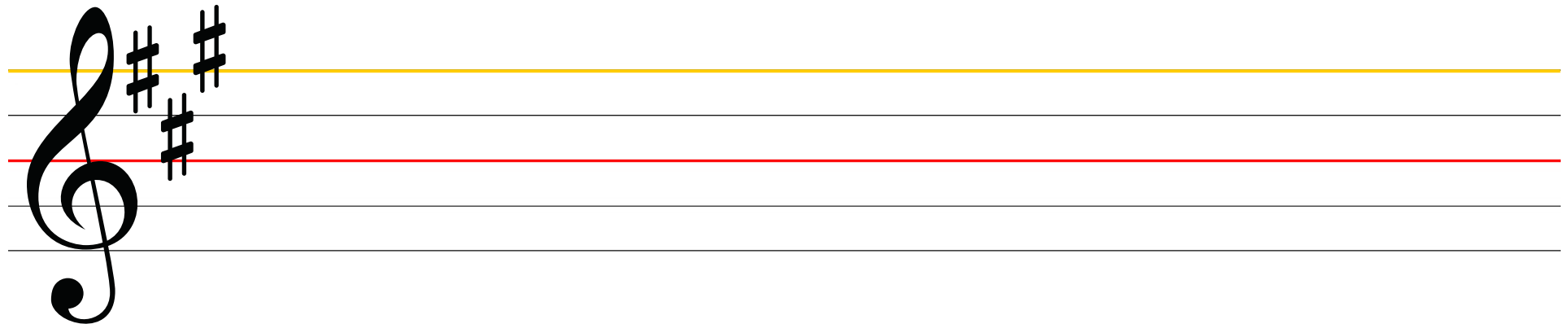
A musical staff in treble clef with a key signature of two sharps (F# and C#). The notes of an A major scale are shown: La (open string, red dot), Si (first space, red dot), Do (second space, red dot), Ré (third space, red dot), Mi (first space, yellow dot), Fa (second space, yellow dot), Sol (third space, yellow dot), and La (third space, yellow dot).

## Activité

1.  2. 

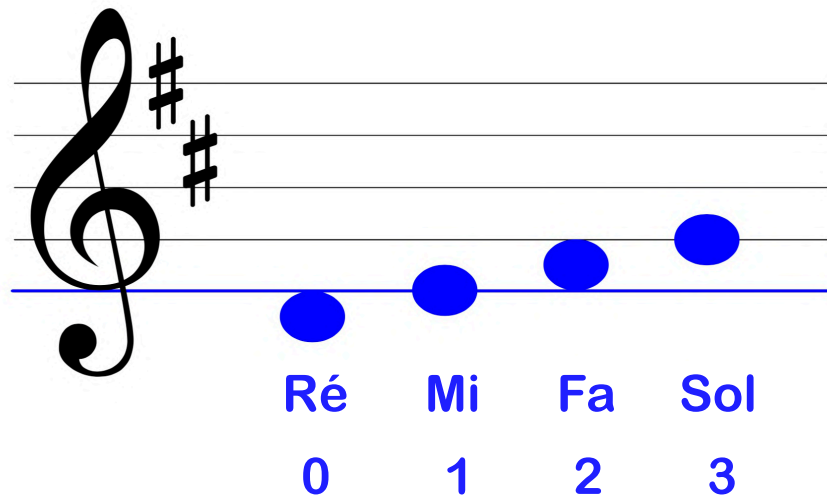


1.  2. 



## Les notes et doigts 0123

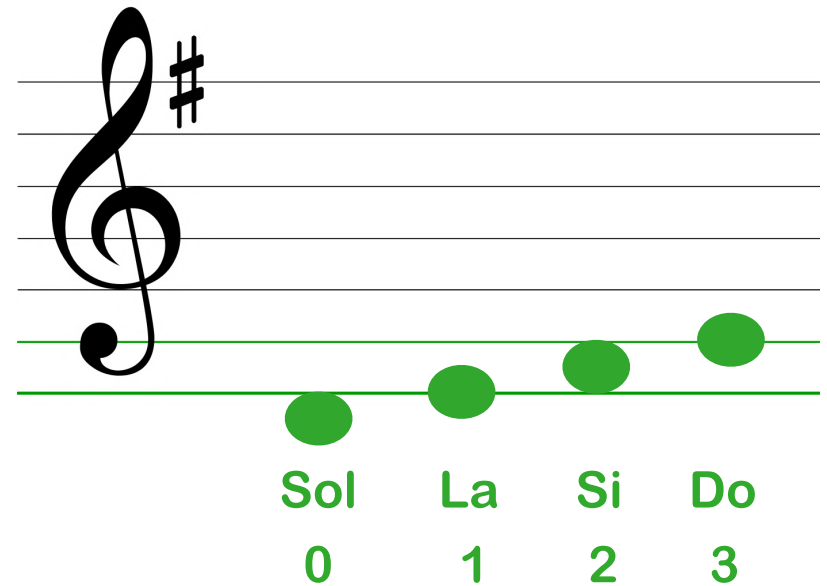
1.  2. 



Ré Mi Fa Sol  
0 1 2 3

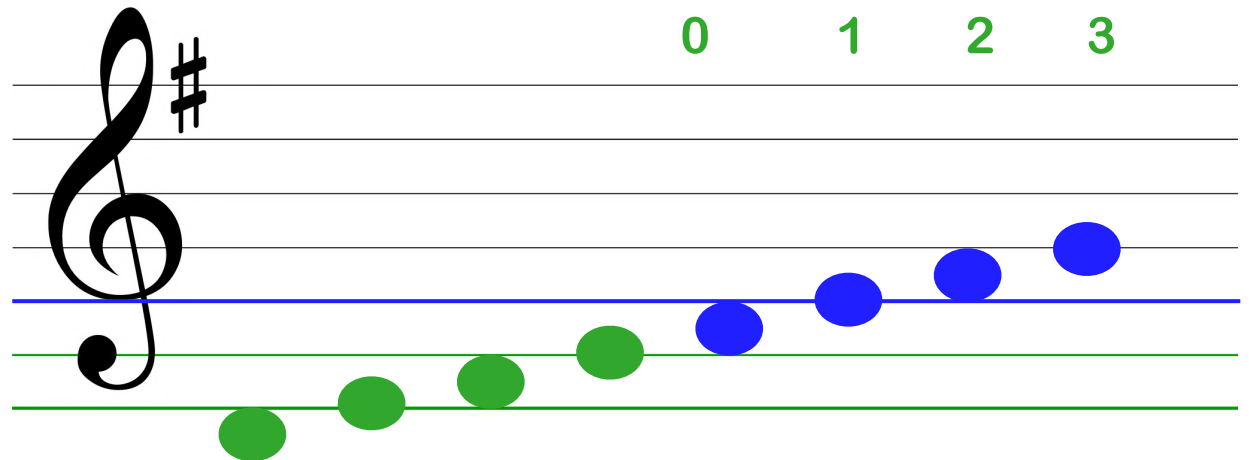
## Les notes et doigts 0123

1.  2. 




Sol La Si Do  
0 1 2 3

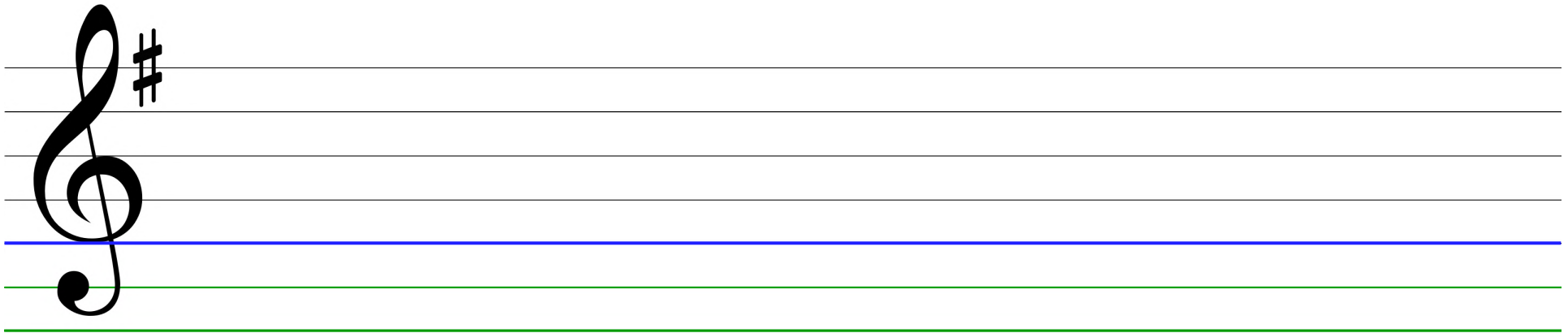
## La gamme de Sol majeur




## Activité

1. 

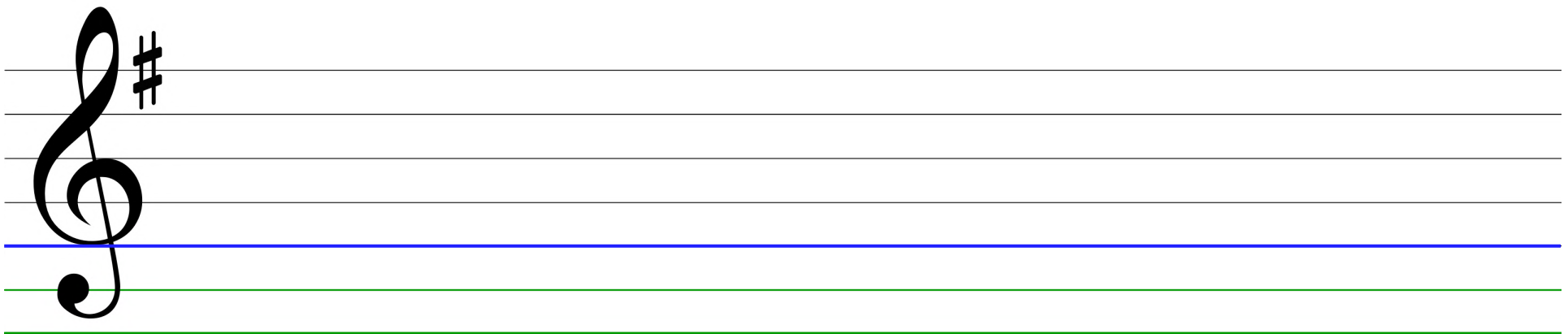
2. 



A musical staff with five horizontal lines. On the left, there is a treble clef and a sharp sign (#) on the second line. The staff is divided into two sections by a blue horizontal line. The top section has two green horizontal lines, and the bottom section has two green horizontal lines.

1. 

2. 

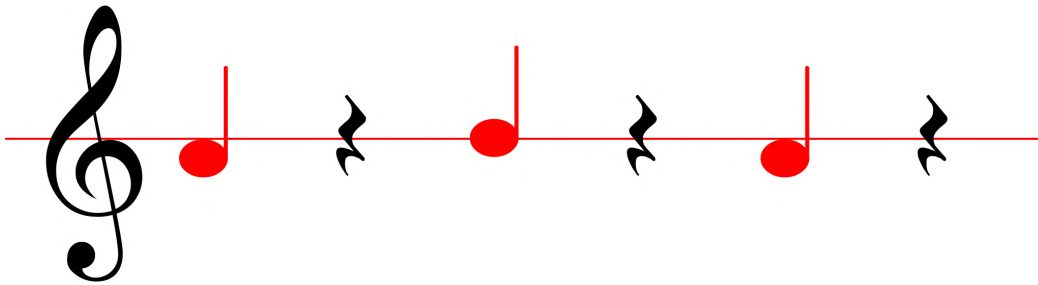


A musical staff with five horizontal lines. On the left, there is a treble clef and a sharp sign (#) on the second line. The staff is divided into two sections by a blue horizontal line. The top section has two green horizontal lines, and the bottom section has two green horizontal lines.

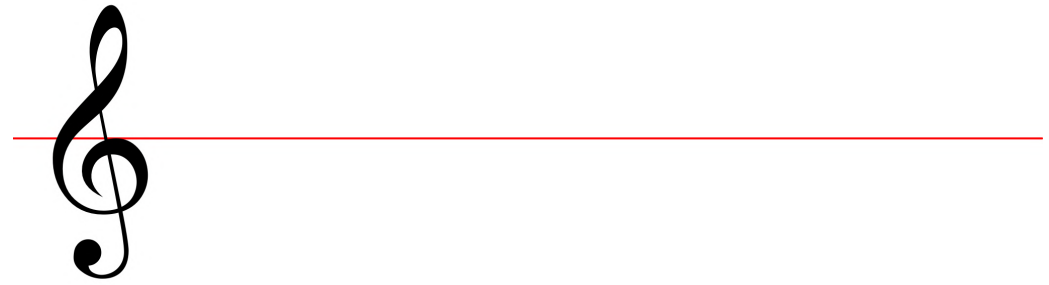


## Acitivité pour le 1er doigt

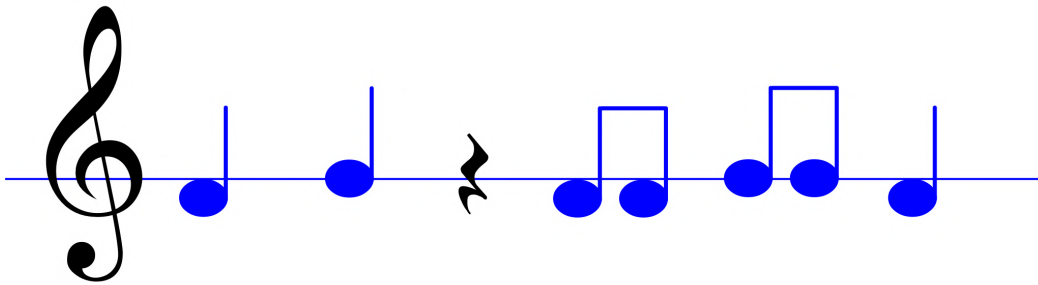
1. 



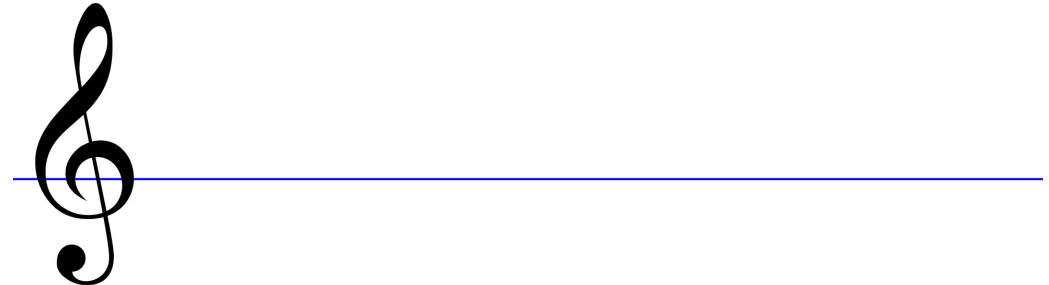
1.  2. 



1. 

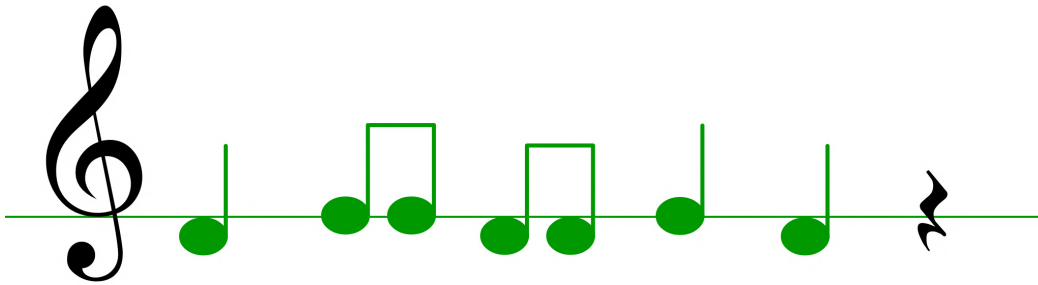


1.  2. 

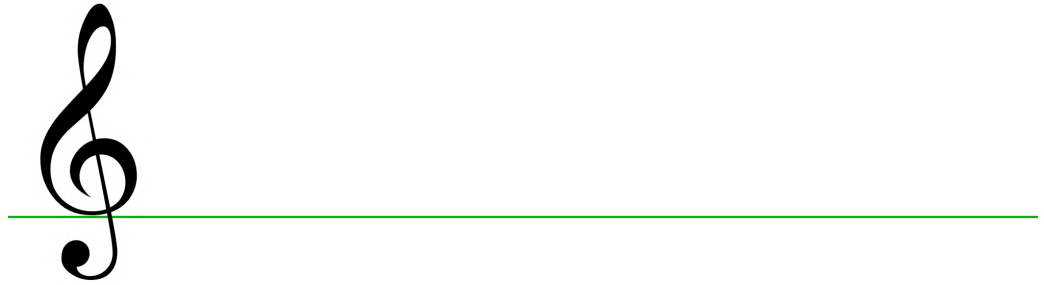


## Activité pour le 1er doigt

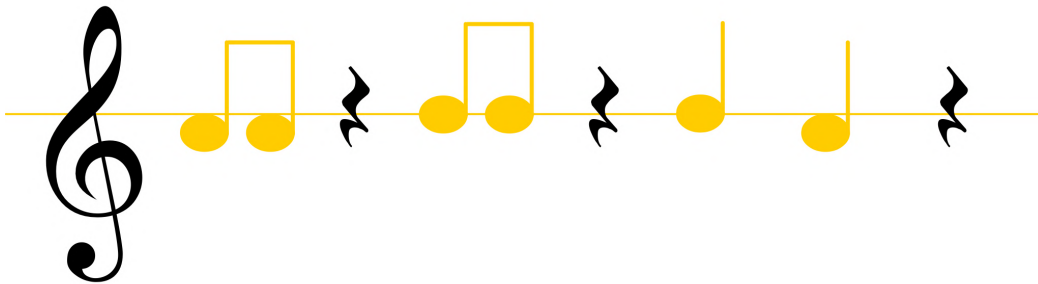
1. 



1.  2. 



1. 



1.  2. 



## Activité pour le 1er doigt

1. 
2. 



1. 
2. 



1. 
2. 

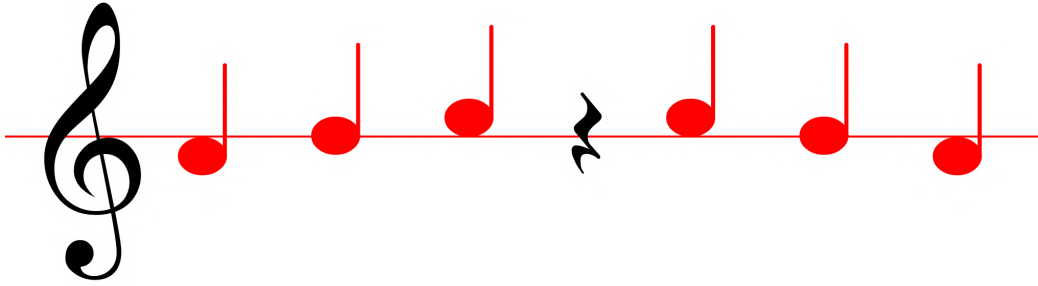


1. 
2. 

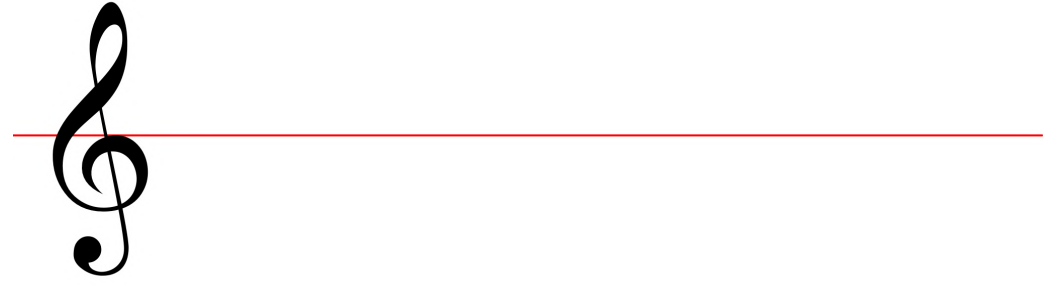


## Activité pour le 1er et 2ème doigt

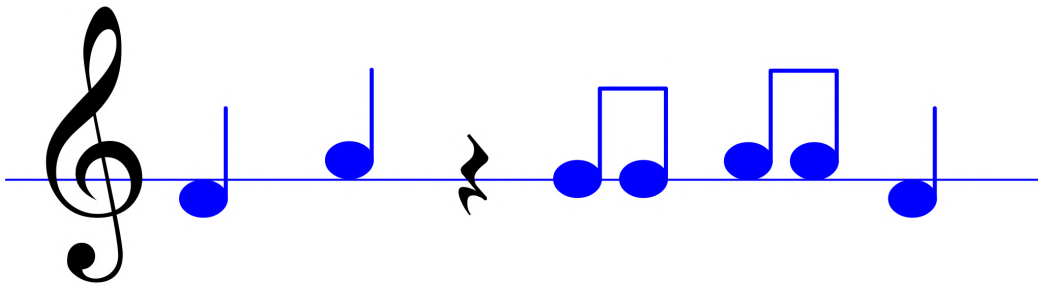
1. 



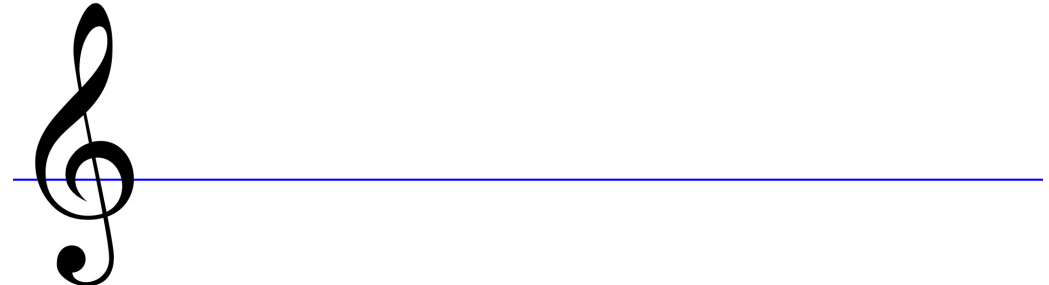
1.  2. 



1. 

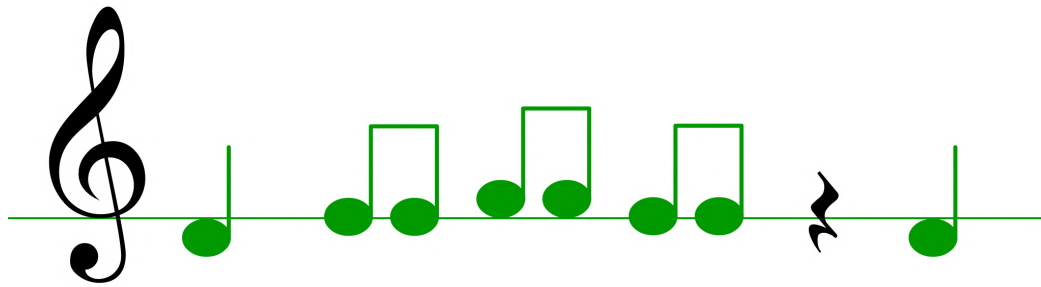


1.  2. 



## Activité pour le 1er et 2ème doigt

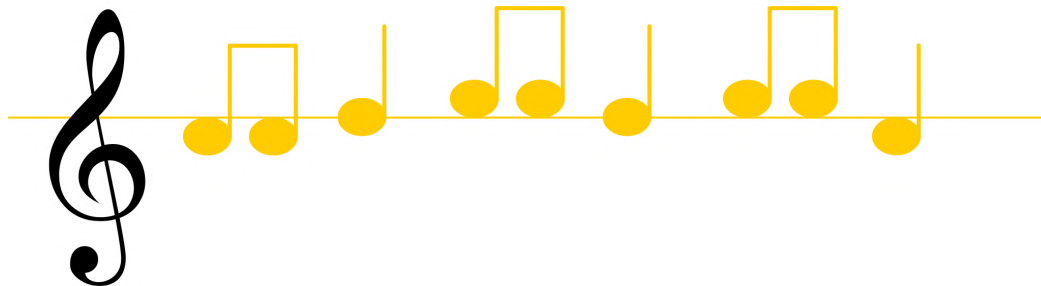
1. 



1.  2. 



1. 



1.  2. 



## Activité pour le 1er et 2ème doigt

1.  2. 



1.  2. 



1.  2. 

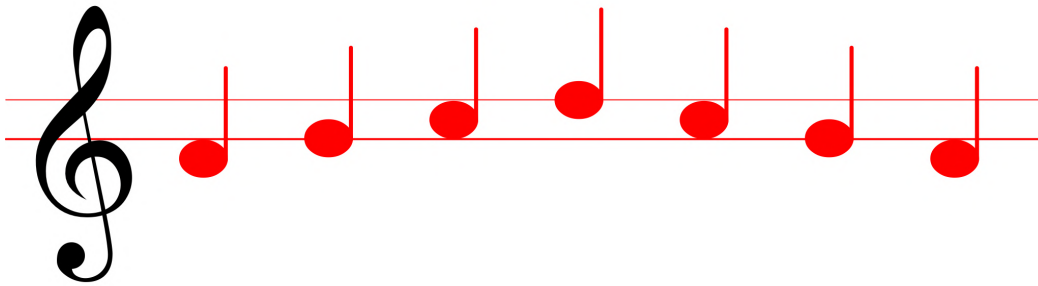


1.  2. 




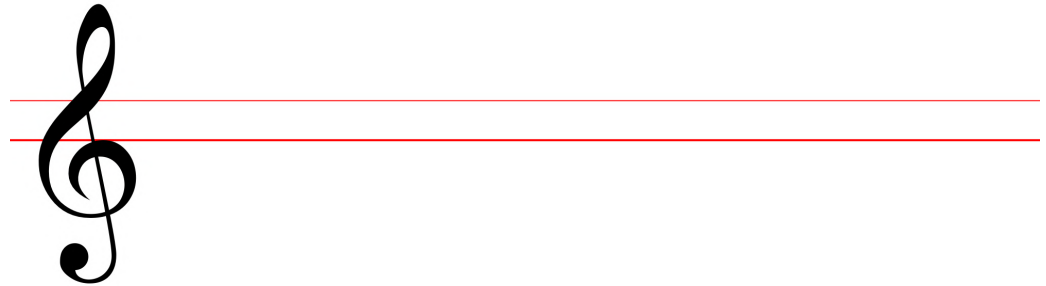
## Activité pour le 1er, 2ème et 3ème doigt

1. 

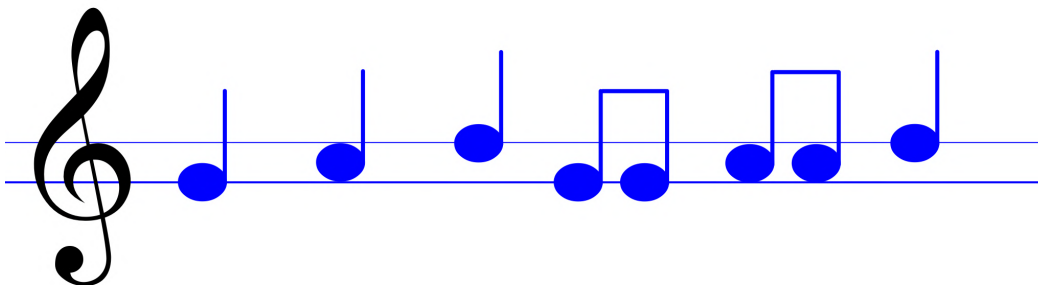


1. 


2. 

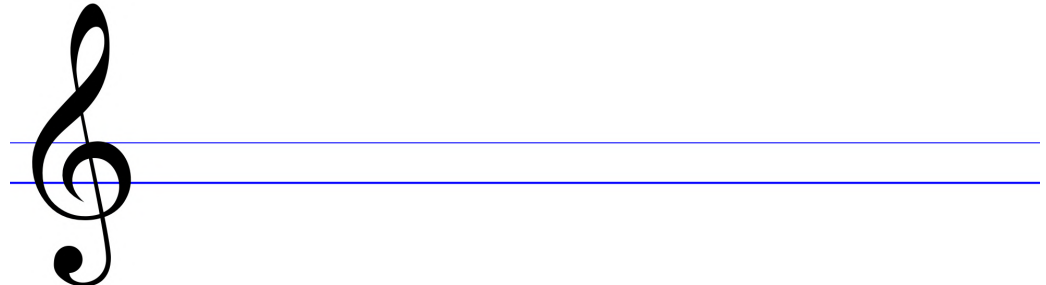


1. 



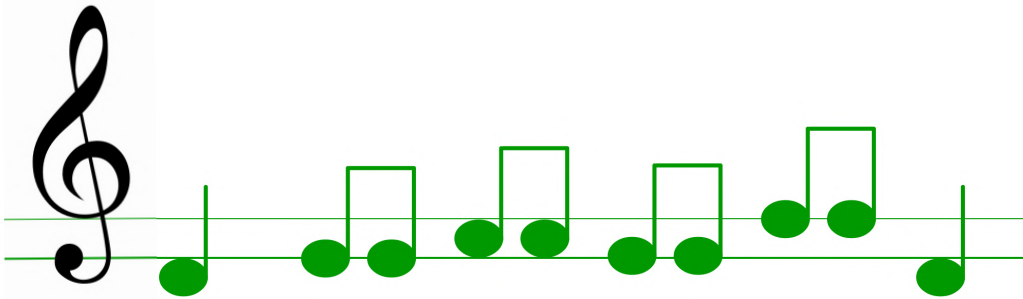
1. 

2. 

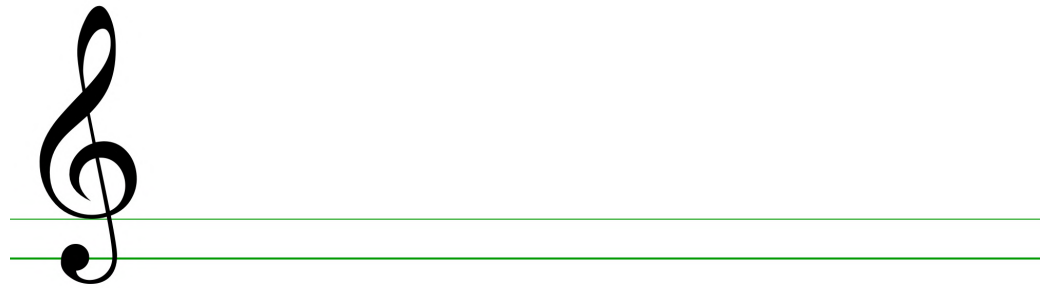


## Activité pour le 1er, 2ème et 3ème doigt

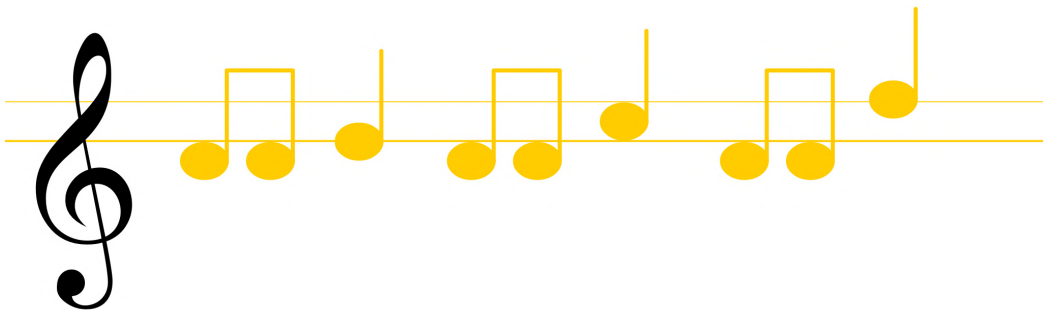
1. 



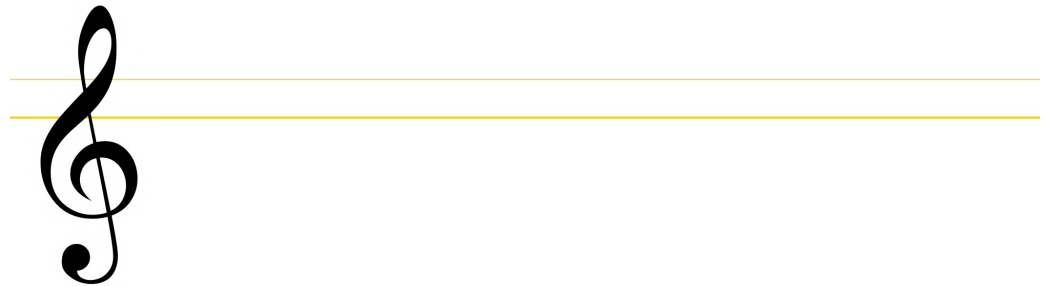
1.  2. 



1. 



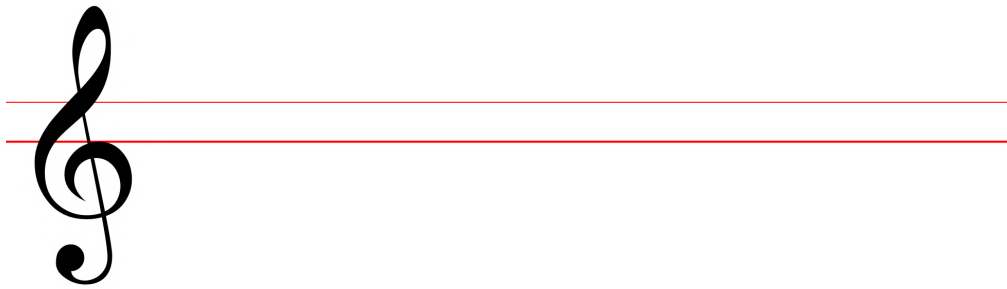
1.  2. 



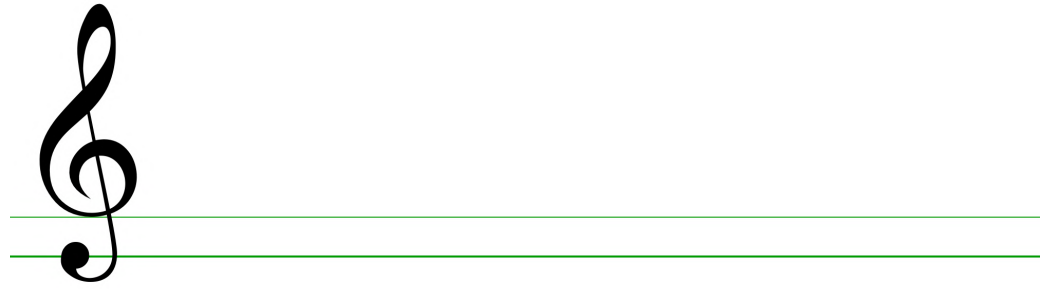


## Activité pour le 1er, 2ème et 3ème doigt

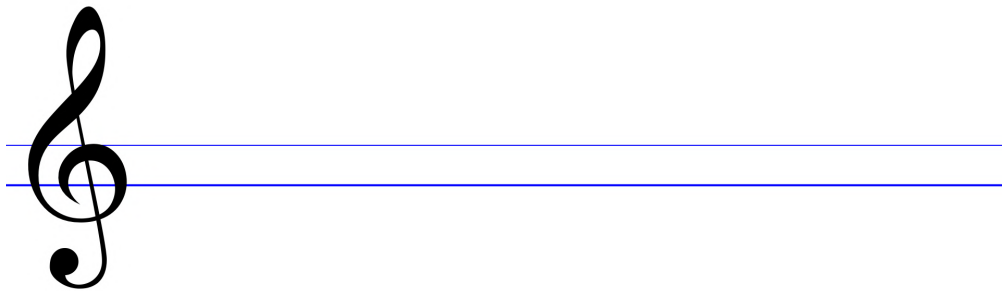
1.  2. 



1.  2. 



1.  2. 



1.  2. 

